

Isle Of Wight
Sales And Lettings Ltd

01983 642122
Info@iowsl.co.uk



Lets Get You Moving



ASKING PRICE
£630,000
Grove Road
Ryde, PO33 3LH

PROPERTY SUMMARY

Nestled at the end of the sought-after Grove Road in Ryde, this stunning detached house, built in 2013, offers a perfect blend of modern living and comfort. Spanning an impressive 2,153 square feet, the property boasts four spacious reception rooms, providing ample space for family gatherings and entertaining guests. The heart of the home features an open plan living area that seamlessly flows into a large conservatory, creating a bright and inviting atmosphere.

With five well-appointed bedrooms, including a master suite with an ensuite bathroom, this residence is designed to accommodate families of all sizes. The additional family bathroom ensures convenience for all. For those needing extra space, the property includes a one-bedroom ensuite annexe, complete with its own entrance and living area. This versatile space can be easily integrated into the main house or kept separate, making it ideal for guests or as a private office.

Outside, the low-maintenance garden is a true entertainer's dream, perfect for summer barbecues or quiet afternoons spent with a good book. For the gardening enthusiast, the raised beds around the property offer an opportunity to cultivate your own plants and personalise the outdoor space.

With ample parking available at the front and solid gates providing added privacy, this exceptional home is a rare find in a desirable location. Whether you are looking for a family home or a property with potential for guests, this residence on Grove Road is sure to impress.

5

3

4









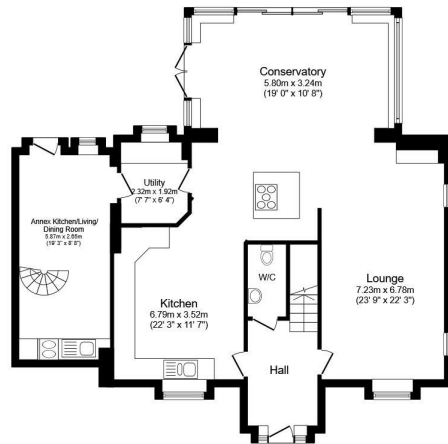
LOCAL AUTHORITY
Isle Of Wight Council

TENURE
Freehold

EPC RATING:
B

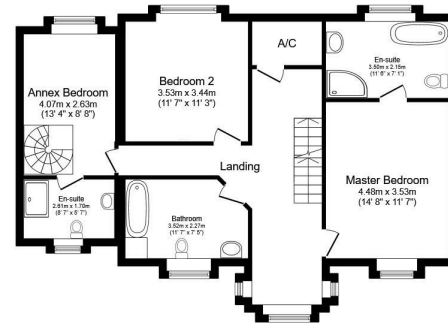
COUNCIL TAX BAND
E

VIEWINGS
By prior appointment only



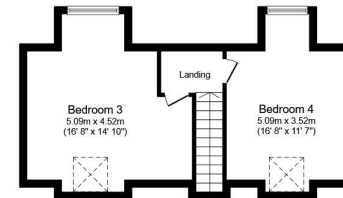
Ground Floor

Floor area 105.5 sq.m. (1,136 sq.ft.)



First Floor

Floor area 85.2 sq.m. (918 sq.ft.)



Second Floor

Floor area 38.6 sq.m. (416 sq.ft.)

Total floor area: 229.4 sq.m. (2,469 sq.ft.)

This floor plan is for illustrative purposes only. It is not drawn to scale. Any measurements, floor areas (including any total floor area), openings and orientations are approximate. No details are guaranteed, they cannot be relied upon for any purpose and do not form any part of any agreement. No liability is taken for any error, omission or misstatement. A party must rely upon its own inspection(s). Powered by www.Propertybox.io

Energy Efficiency Rating		Current	Potential
Very energy efficient - lower running costs			
(92 plus) A			
(81-91) B		81	
(69-80) C			
(55-68) D			
(39-54) E			
(21-38) F			
(1-20) G			
Not energy efficient - higher running costs			
England & Wales		EU Directive 2002/91/EC	

Agents Note: Whilst every care has been taken to prepare these particulars, they are for guidance purposes only. All measurements are approximate and are for general guidance purposes only and whilst every care has been taken to ensure their accuracy, they should not be relied upon and potential buyers/tenants are advised to recheck the measurements



OFFICE ADDRESS

Flat 7 Auckland Court, 11 Auckland
Road East
Southsea
PO5 2HA

OFFICE DETAILS

01983 642122
info@iowsl.co.uk